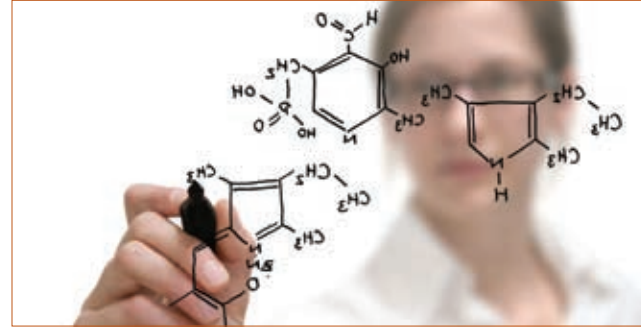


## PART III

# Changing with industry



*This is the third of a three-part article on OREF's Clinician Development Program (CDP) that facilitates industry support of orthopaedic education, training, and research while maintaining appropriate relationships with academic institutions and the surgeon community.*

Stryker has had a long-standing commitment to advancing research and education, from the building of its acclaimed Homer Stryker Center to its recent commitment to increase its support through OREF to help address the growing and unmet research and development, education, and training needs of the global orthopaedic surgeon community and other professionals in a changing health care environment.

*\*To read parts I and II of "Partnering with Industry in New Ways," please log onto [www.oref.org/impact](http://www.oref.org/impact) and click on Fall 2009 and Spring 2010.*

## OREF RESPONDS

Implemented two years ago, the OREF Clinician Development Program (CDP) provides a conduit for companies to contribute to continued advances through orthopaedic education and research, while complying with best practices for transparency and independence.

"OREF reached out to major companies and said, 'What can we do to help?'" recalled **Ms. Yin Becker**, vice president for Healthcare Innovations at Stryker. "OREF was responsive and visionary — it was one of the first organizations to put a system in place to restructure partnerships with industry."

Stryker, a global medical technology company that provides a broad range of orthopaedic procedures, services, and medical equipment, has supported OREF's mission for more than 20 years. Ms. Becker said both organizations have long shared a common belief: The only way to ensure continued innovation in the field and positively impact patient outcomes is to secure ongoing support for research, training, and education.

The CDP provides support for individual research grants, plus three types of institutional educational grants — for graduate medical education (GME) fellowships, residency enhancement programs, and continuing medical education (CME).

Ms. Becker said adding the CDP to its partnership with OREF allowed Stryker to reaffirm its commitment to the rigorous education and training orthopaedic surgeons need to keep pace throughout their careers. "We saw it as a natural continuation or evolution of what we were already doing," she added.

## WHERE SUPPORT IS MOST NEEDED

Companies that support CDP grants may allocate funding to specific grant types and practice categories. Once



the company makes a general allocation, OREF independently administers all aspects of the CDP process, from establishing eligibility and qualification criteria through selecting grant recipients and monitoring their progress. CDP fellowship grant recipients — institutions, not individuals — are selected based on a donor-blind selection process, a system approved by monitors appointed by the U.S. Department of Justice.

Stryker focused its most recent contribution on research, education, and training in adult reconstruction, spine care, and sports medicine, as well as residency enhancement grants. Ms. Becker said that decision was based partly on Stryker's key areas of focus and was also informed by the consultation and expertise provided by OREF.

"Stryker is uniquely positioned and operates in many different fields, so we asked where the need was greatest for research and education," she said.

## KNOWING TODAY'S PATIENTS

Thanks to the partnerships developed by OREF with health care professionals, Ms. Becker said, she has gained a clear understanding of how the industry can best support cutting-edge research and the most essential training opportunities.

"The demand on health care professionals to be responsive to the changing needs of patients takes a great deal of their time and effort," she said. "Having the knowledge and skills to do that job well — day to day, year to year — makes all the difference."

While Ms. Becker said it is too soon to measure the direct benefits of supporting the CDP, she is certain it will have a beneficial impact on the quality of patient care.

"Patients today are more accustomed to an active lifestyle, and the industry has to provide the right education and research to find innovative ways to meet their needs," she said. "OREF has a process to provide Stryker and other companies with that opportunity."

## GETTING AN EDUCATION

### OREF CDP GRANTS CREATE OPPORTUNITIES FOR ORTHOPAEDISTS TO LEARN

Two years ago, OREF implemented the Clinician Development Program (CDP), a new way for industry to support clinically relevant research, training, and educational programs for orthopaedic surgeons. Even in its first year, the 2009-2010 CDP grants provided concrete benefits to the programs that were selected by OREF's Educational Grants Board for funding. For example:

- An OREF continuing medical education (CME) grant meant that additional researchers could attend courses offered by the International Society for Technology in Arthroplasty (ISTA) and share their expertise.
- For residents in orthopaedic research at the University of Missouri – Kansas City, an OREF residency enhancement grant broadened the scope of their training to include topics that would not have otherwise been explored.
- Fellows in adult reconstructive surgery at the OrthoCarolina Hip and Knee Center could continue their work with the aid of a graduate medical education (GME) fellowship grant through OREF.

## SHARING NEW RESEARCH

At a time when grant sources are few and funding for some areas of orthopaedic research are almost non-existent, the CDP is filling some gaps. ISTA Program Director **Hani Haider, PhD** said that by receiving a \$25,000 OREF CME grant, the society was able to further one of its fundamental goals: Sharing new technologies and procedures in arthroplasty worldwide.

## THANK YOU, DR. HAMILTON. . .

we've adopted your excellent suggestion.

Institutions that have previously applied for OREF CDP fellowship grants are invited to complete a streamlined application for 2011-2012 funding. All CDP grant requests — supporting CME courses, GME fellowships, and residency enhancement programs — are due to OREF October 13, 2010. Visit [www.oref.org/cdp](http://www.oref.org/cdp) for details, including downloadable applications.

The CME grants for 2009-2010 offered funding to support courses in hip and knee arthroplasty, which was ideal, Professor Haider said, because the majority of the clinical research studies presented at the ISTA course supported by the OREF grant addressed those topics. While additional funding to support research presentations regarding arthroplasty in spine would have also been beneficial, Professor Haider said he greatly appreciated the intent of the grant.



▲ James J. Hamilton, MD

**James J. Hamilton, MD**, who oversees the residency program in Orthopaedic Surgery at the University of Missouri – Kansas City, agreed that funds are difficult to find and that OREF residency enhancement grants really do help. “We were very pleased to have been selected for this grant. It allows considerable additional opportunity for our residents,” he said.

### THE NEED FOR MORE SUPPORT

The breadth and depth of need for educational grants are tremendous. As OREF listens and responds to the various needs of orthopaedic educators, the magnitude of the challenge becomes apparent.

For example, the first OREF CME grants for 2009 courses focusing on hip and knee arthroplasty were awarded at \$25,000. When the next set of CME grants were offered, for 2010 courses, the number of qualified grant applicants increased disproportionately to the funding available, leading OREF to award more grants but fewer dollars per grantee than in the prior year.

For ISTA, Professor Haider explained, the grant amount dropped from \$25,000 to \$15,000. “We hope that industry will better understand the need for additional grant monies and that OREF will aggressively pursue them,” he said.

**Thomas K. Fehring, MD** directs the Adult Reconstructive Surgery fellowship through OrthoCarolina Hip and Knee Center. In 2009-2010, his program received a \$75,000 OREF GME fellowship grant. While the funding was greatly appreciated, he said, it was well below the amount needed.

The fellowship “did not cover the salary and expenses for even one of our fellows,” he said. “We have a total of three



▲ Thomas K. Fehring, MD (standing) with fellows: (l-r) Aric Christal, MD; Brian Curtin, MD; and Brett Perricelli, MD.

adult reconstruction fellows so you can see the shortfall that we encountered.”

The primary concern expressed by CDP grant recipients was for a larger pool of funding and for more subspecialties. On the administrative side, Dr. Hamilton suggested OREF maintain a master file of basic applicant information to speed the process along. Drs. Hamilton and Fehring and Professor Haider agree that OREF effectively communicates availability of grants and other funding opportunities, and they plan to apply for CDP funding again. ■

## CONGRATULATIONS

to these additional OREF grant recipients

### OREF CLINICIAN DEVELOPMENT PROGRAM

2010 continuing medical education grants for programs focusing on pain management and/or osteoarthritis

*Made possible by support provided by Pfizer*

**American Academy of Orthopaedic Surgeons**  
*AAOS/AAHKS Improving Outcomes for Partial, Primary, and Revision Knee Arthroplasty*

**American Academy of Orthopaedic Surgeons**  
*AAOS/ASES Shoulder Arthroplasty: Surgical Indications and Techniques*

**American Association of Hip and Knee Surgeons**  
*Advances in Arthroplasty, AAHKS 20th Annual Meeting*

**Case Western Reserve University/ Current Concepts in Joint Replacement**  
*CCJR Winter Meeting, 2010*

**Eastern Orthopaedic Association**  
*Eastern Orthopaedic Association 41st Annual Meeting*

**Foundation for Orthopaedic Research and Education**  
*Orthopaedics for the Primary Care Practitioner and Rehabilitation Therapist*

**Louisiana State University Health Science Center**  
*Osteoarthritis Injection Workshop*

**Orthopaedic Education, Inc.**  
*Annual Advances in Arthritis, Arthroplasty, and Trauma*

**Sinai Hospital of Baltimore/Rubin Institute for Advanced Orthopaedics**  
*Fourth Annual Hip Joint Course: Treatments for Young Patients with Hip Arthritis Arthroscopy – Impingement – Anterior Approach – Resurfacing – MIS Hip*

**University of California, San Diego**  
*Managing Pain in the Orthopaedic Patient: Strategies and Recommendations*

**University of Minnesota**  
*Geriatric Trauma Summit 2010*

**Western Orthopaedic Association**  
*Western Orthopaedic Association 74th Annual Meeting*

## AS SEEN IN AAOS NOW

The American Academy of Orthopaedic Surgeons (AAOS) publishes OREF news and articles in its monthly journal, *AAOS Now*. To read copies of published articles, such as those listed below, log on to [www.oref.org/oref-aaosnow](http://www.oref.org/oref-aaosnow).



### INFECTION

Solving the infection puzzle: OREF grant recipient researches bacterial causes of osteomyelitis



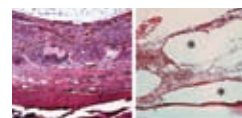
### TRAUMA

High cholesterol and tendon injury: OREF grant recipient studies intrinsic causes of tendon problems



### GIVING BACK

Orthopaedic advances depend on research, education: Million-dollar donor to OREF encourages others to give back



### SPINE

Engineering tissue for spinal fusion



### PARTNERSHIP

Pfizer supports CME through OREF



### GIVING BACK

Full circle: Patient experience leads to a career in and a commitment to orthopaedics, OREF